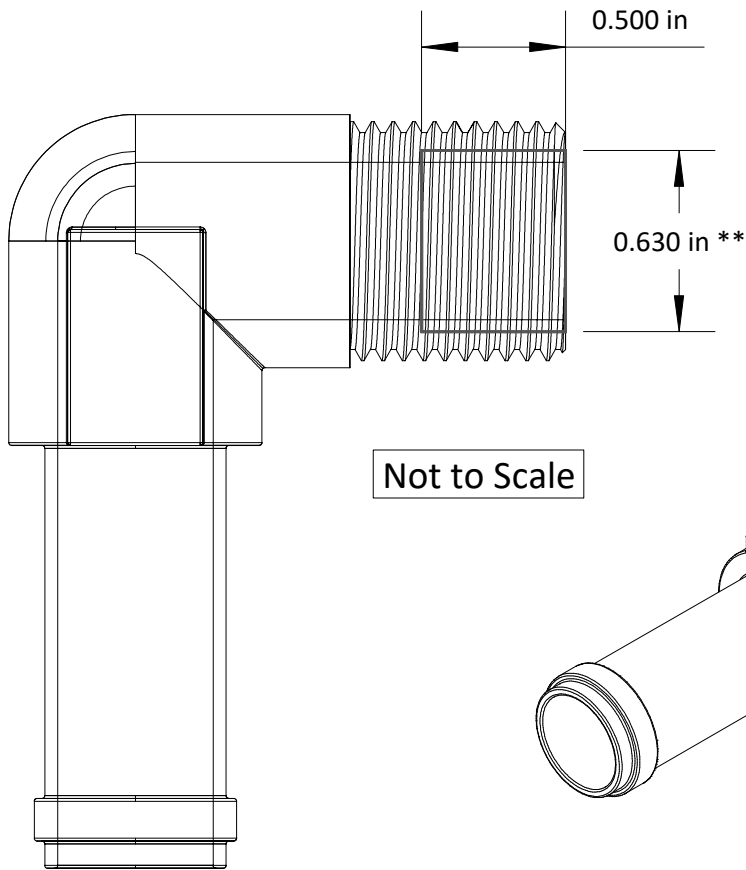


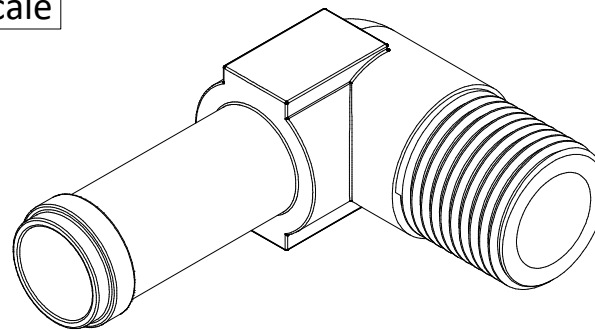
Modification to Extend Crankcase Vent Fitting

Tools

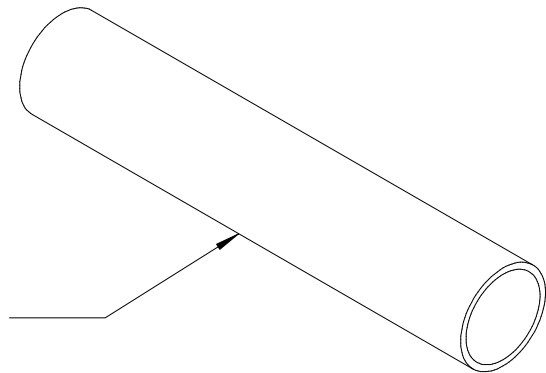
To make an accurate hole, you will need a boring mill with a boring head.



** Bore the hole 0.002" to 0.005" over the outside diameter of the copper pipe.



Not to Scale



Instructions

1. Cut the tubing 3 1/4" long.
2. Bore a hole 1/2" deep in the fitting, as shown.
3. Silver solder the tube into the fitting.
4. The tube should extend 2 3/4" from the fitting when finished.

Materials

Use Harris Stay-Silv White Brazing Flux and Harris Safety-Silv 56 1/16" Silver Brazing Alloy